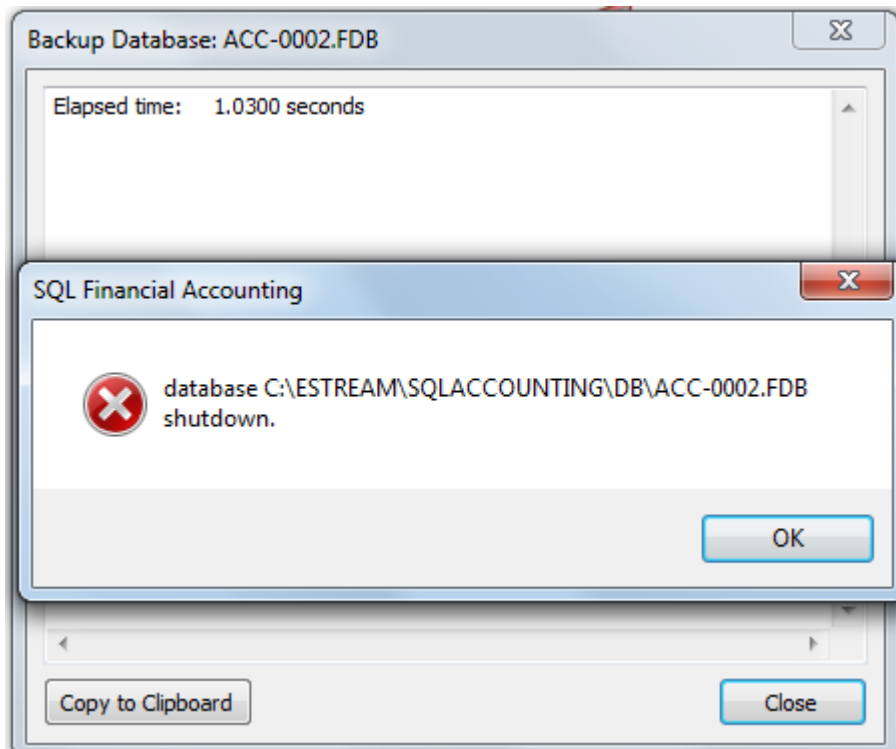


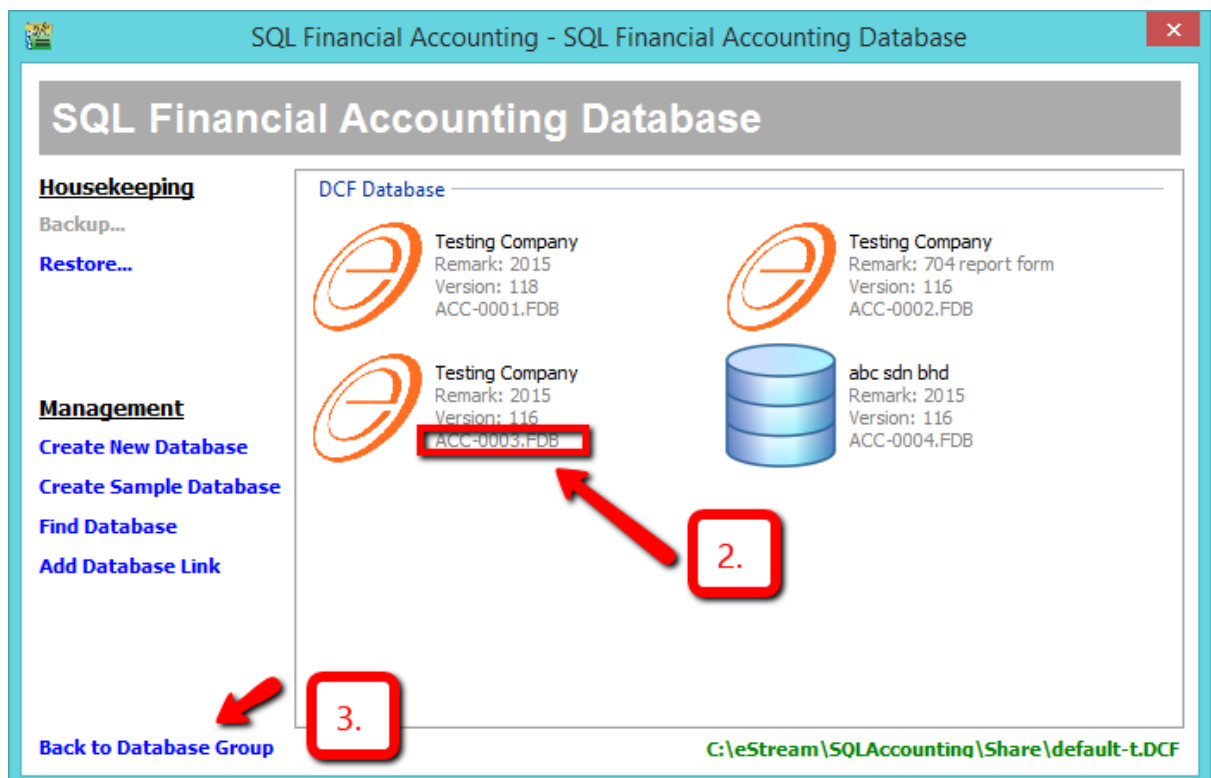
How to solve database Shut Down error as below during Backup



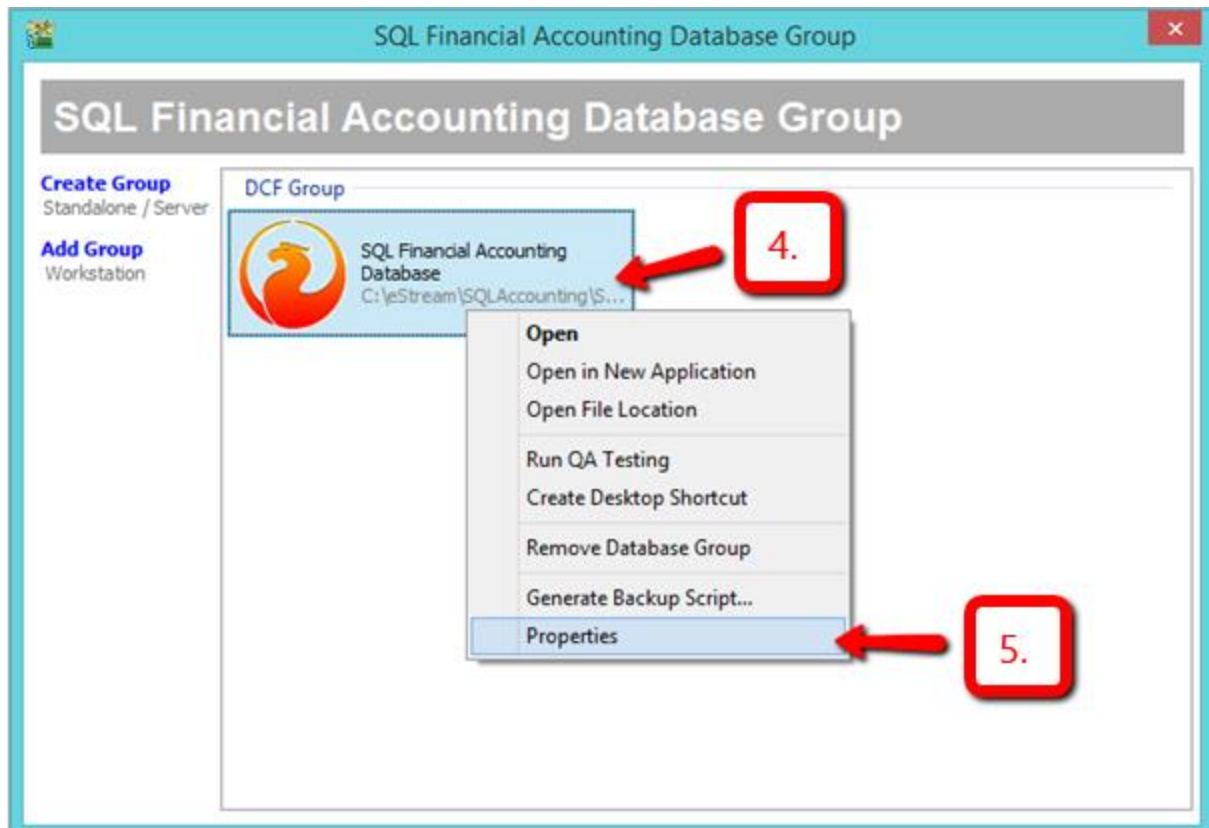
ALL SQL PC Logout & go to MAIN SERVER PC To refer below guideline on how to solved this error .



- 1) Click on the ... button

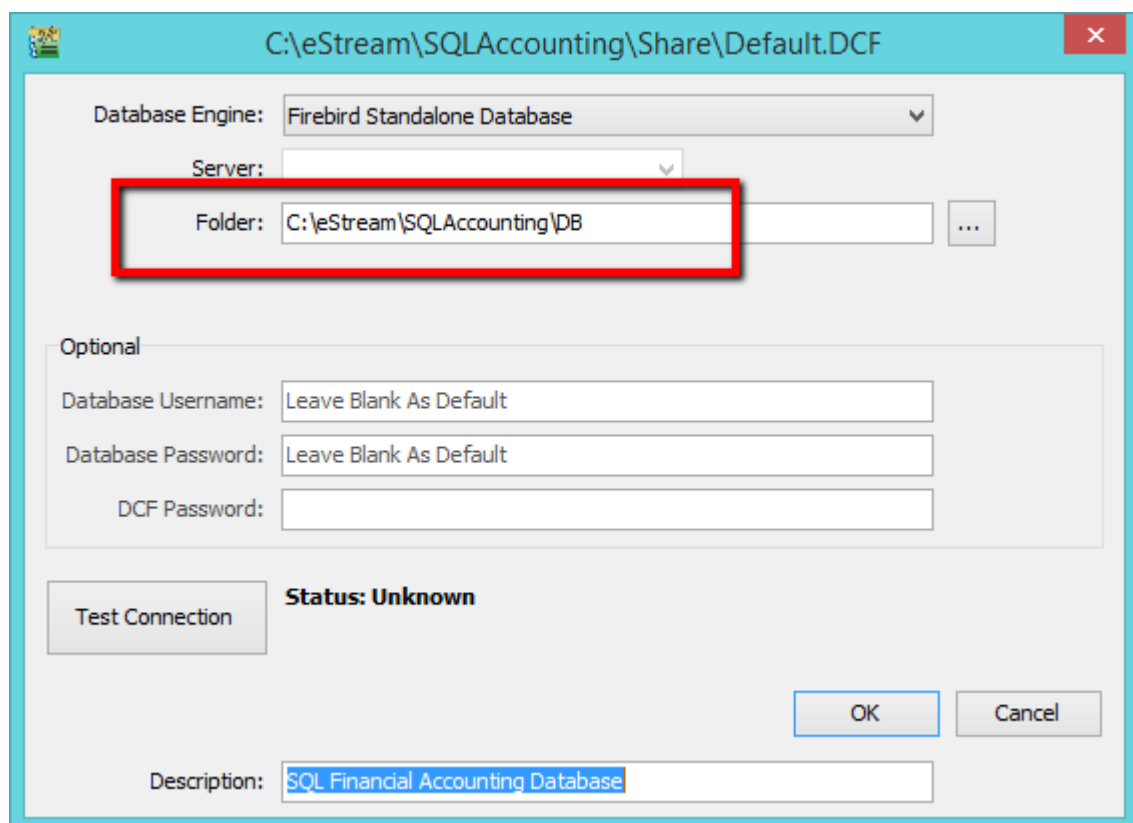


2. Look for the database cant login, check the ACC-XXXX.FDB (for step 10 purpose)
- 3) Click on Back to Database Group



4) Right click on Firebird Icon

5) click on Properties

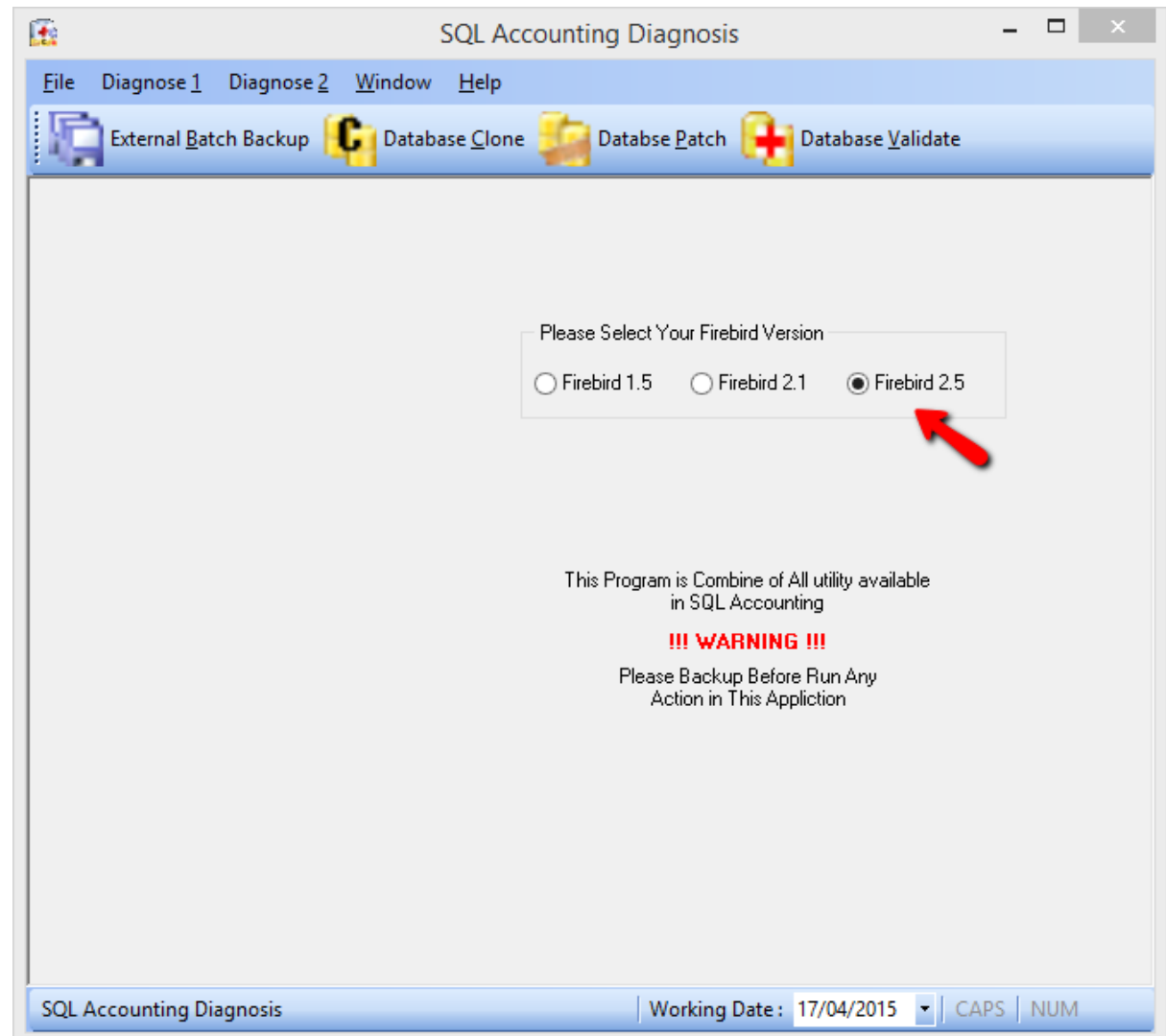


6) remember your DB Folder path (for step 10 purpose)

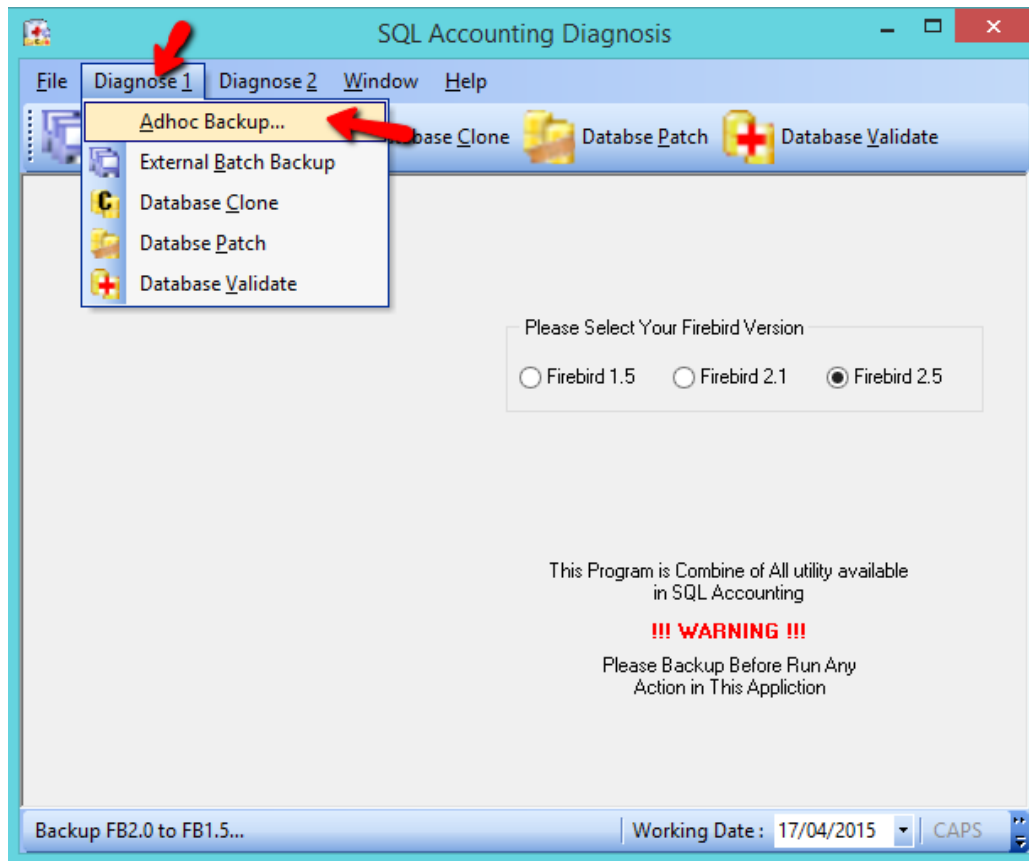
Download SQL Accounting diagnosis & install it

<http://www.sql.com.my/utility/SQLAccDiagnosis-setup.exe>

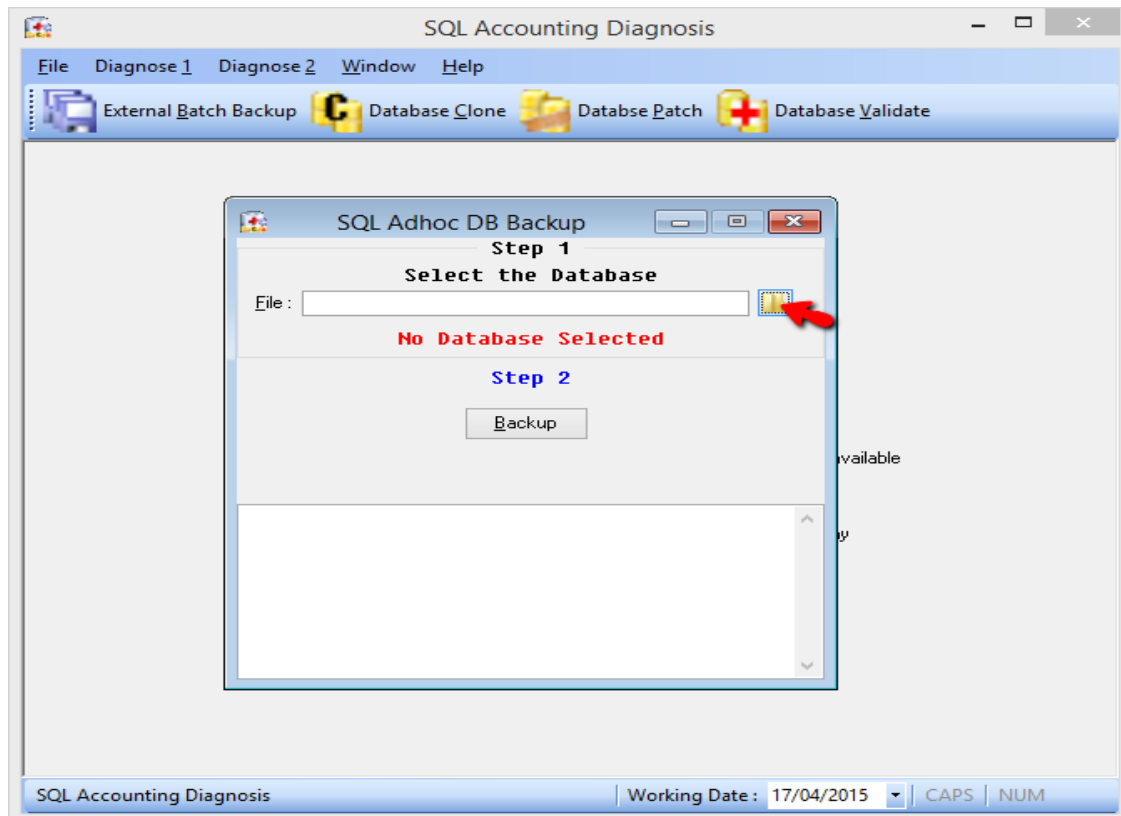
user & password : sqlutility



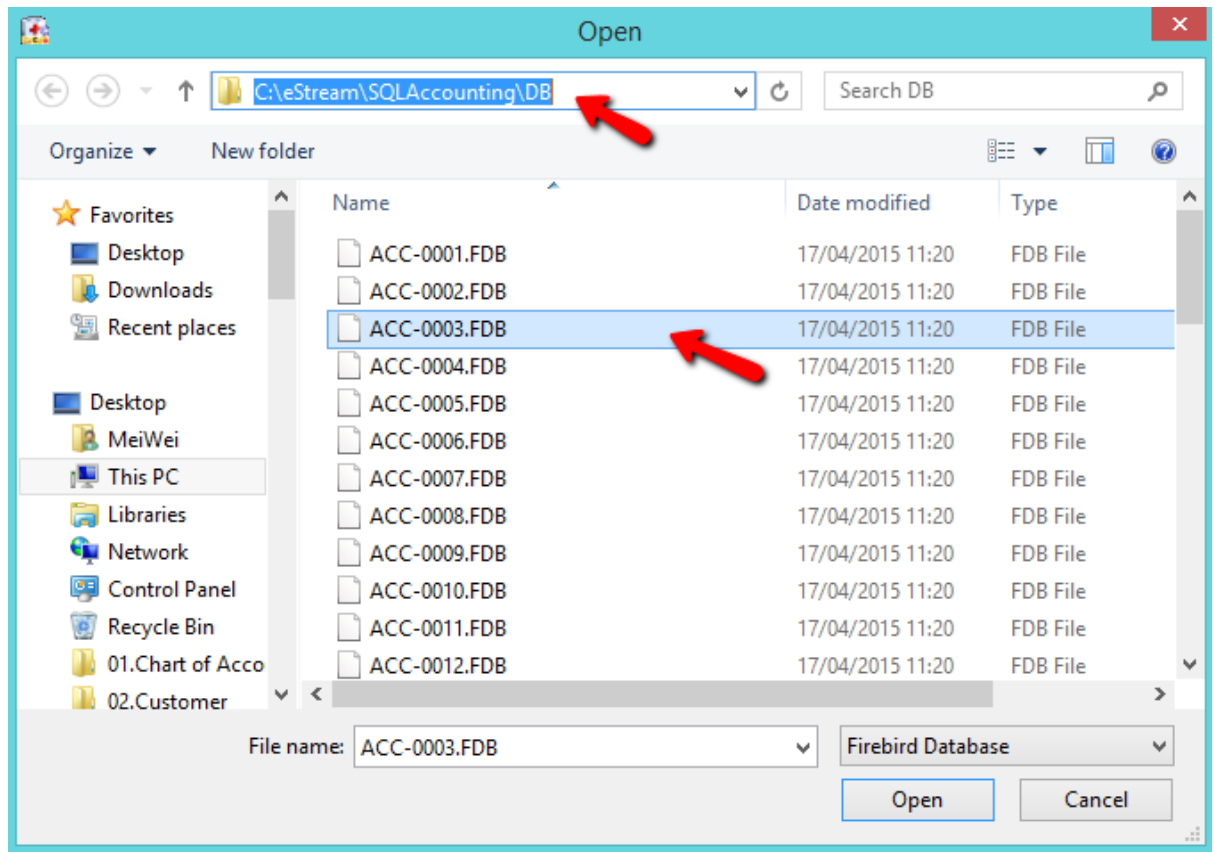
7) Launch your SQL Accounting Diagnosis, click on **Firebird 2.5**



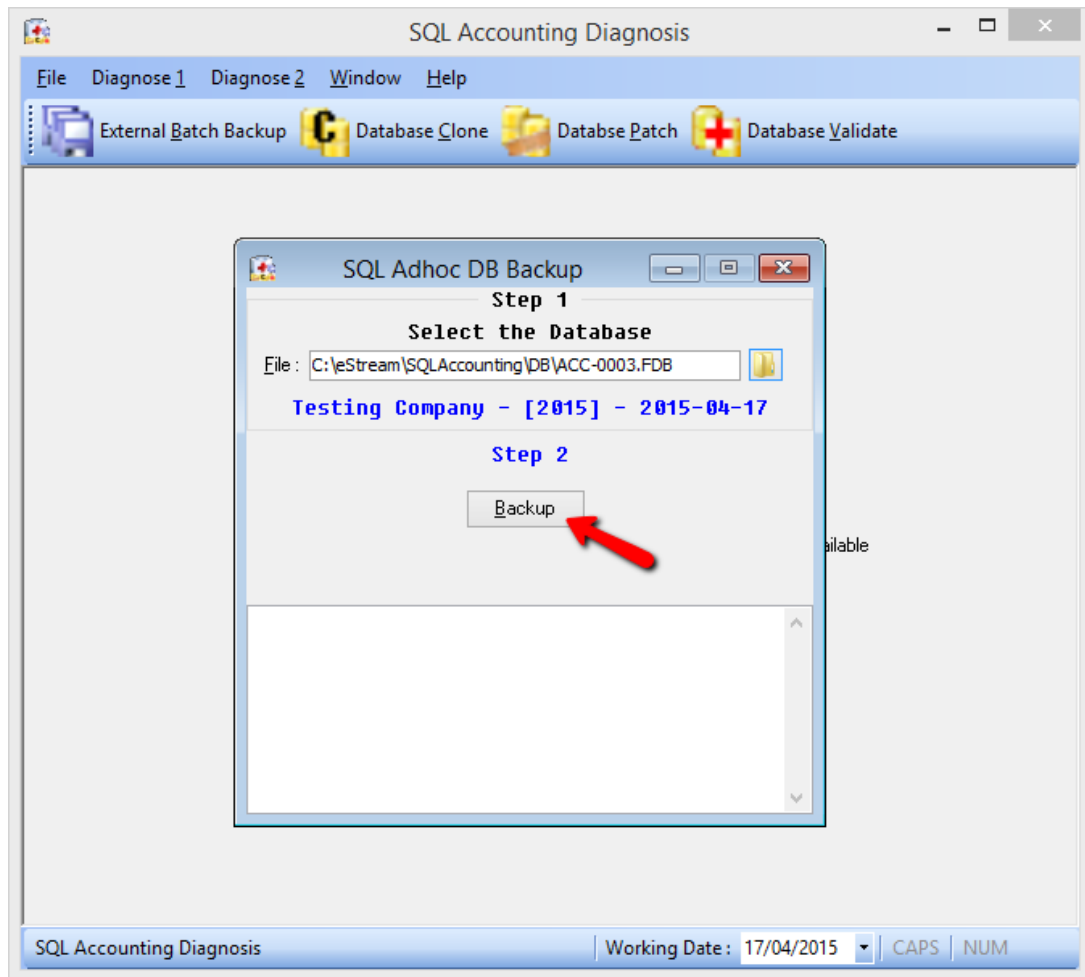
8) Go Diagnosis 1 > Adhoc Backup



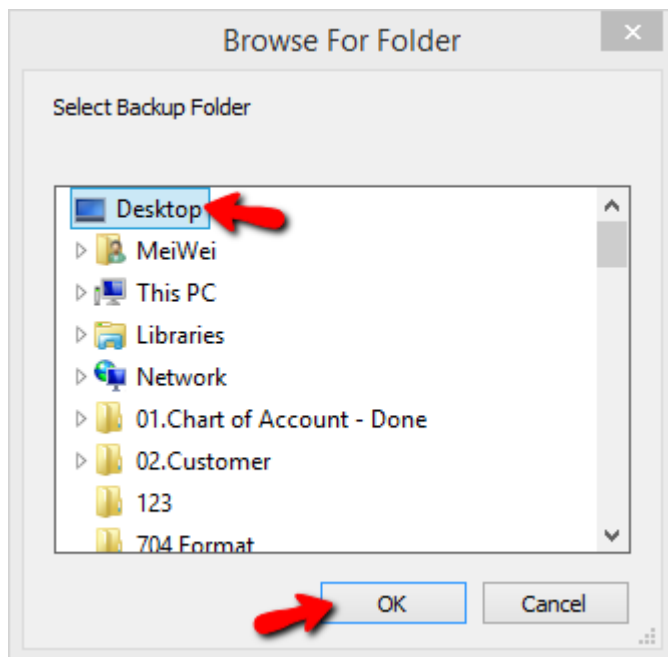
9) Click on the Yellow Color Folder to choose your FDB .



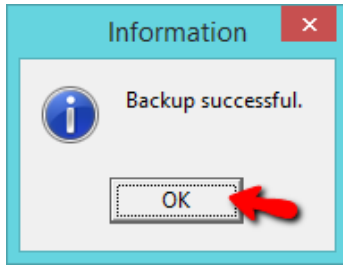
10) Refer [Step 6](#) on how to check the FDB & Select the ACC-XXXX.FDB



11) Click on Backup



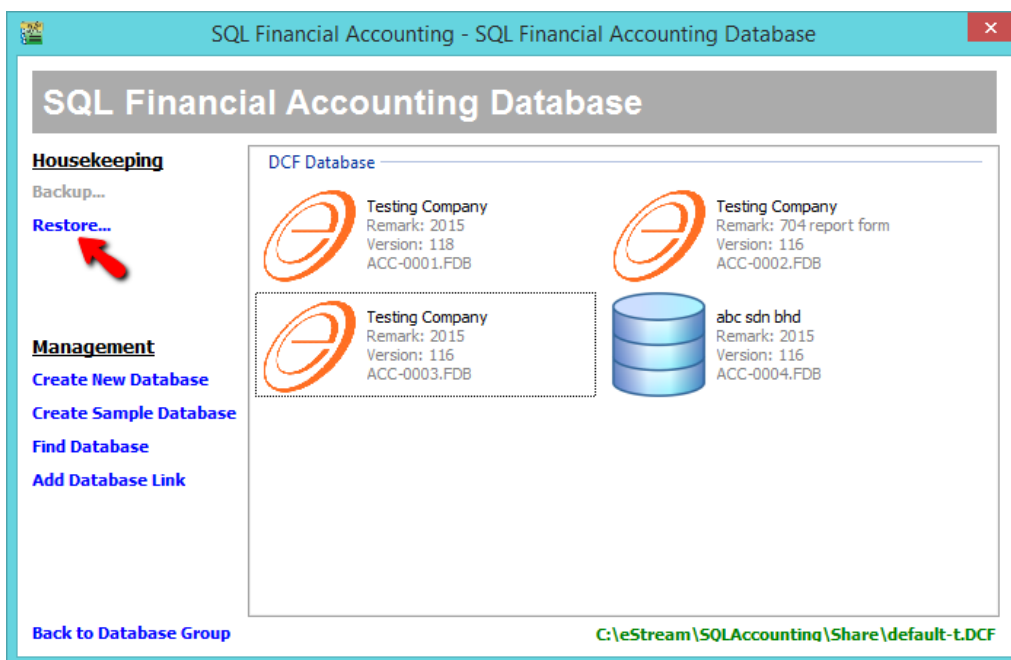
12) Select Backup to Desktop and press on OK



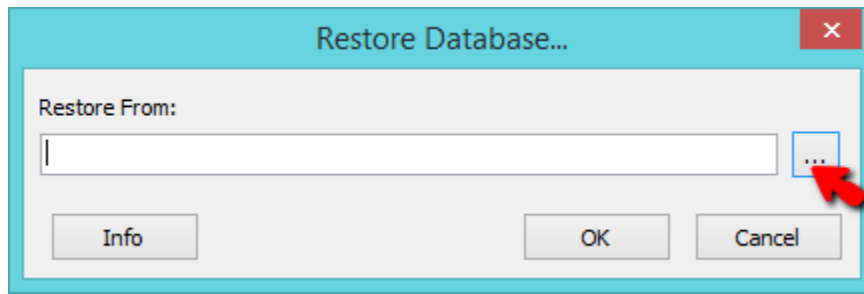
13) Click OK



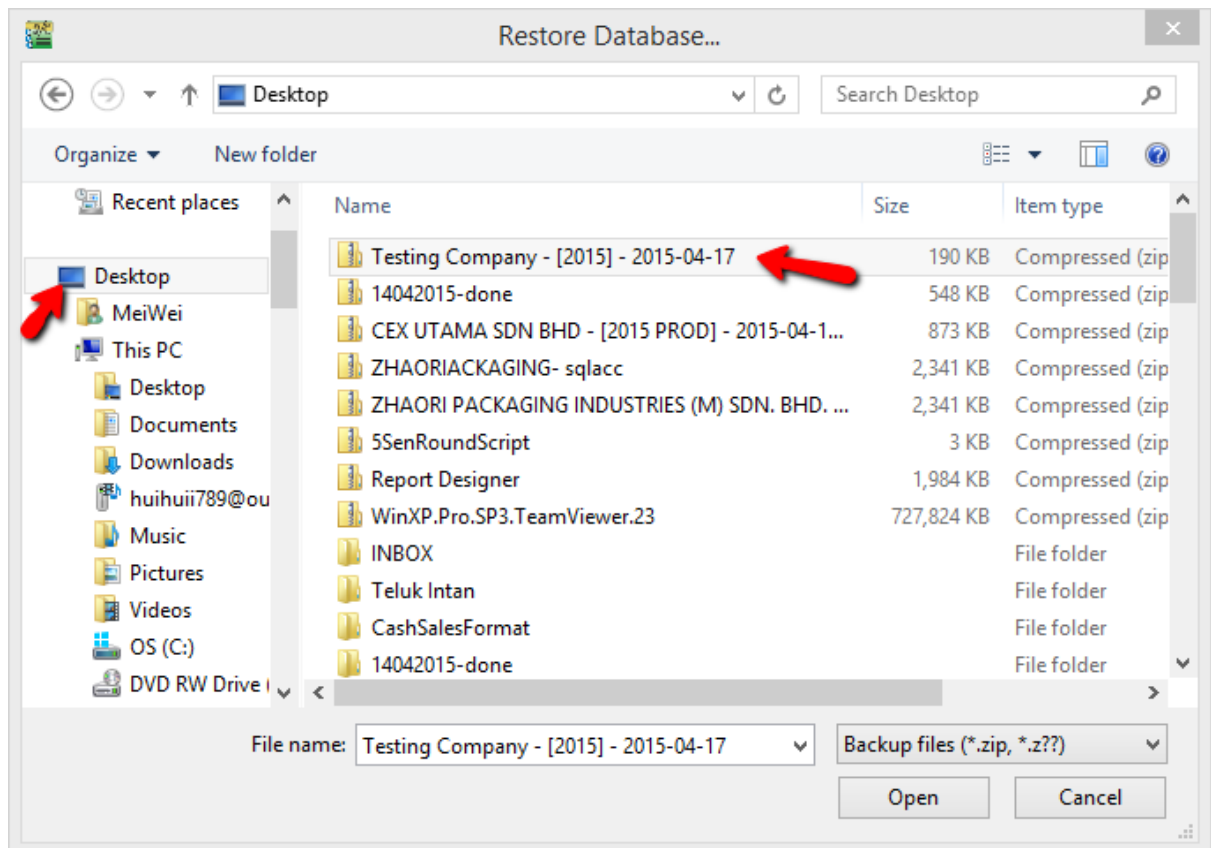
14) go back SQL & Click on ... button



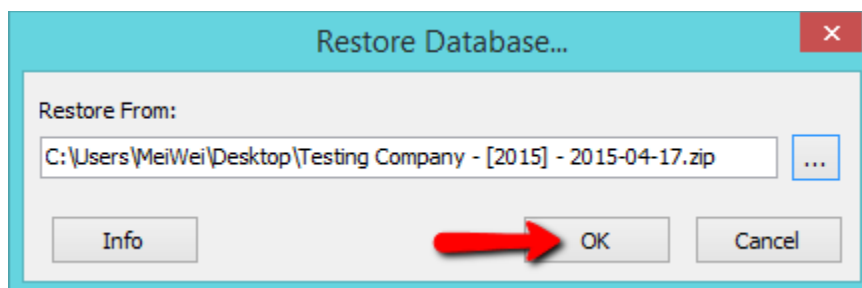
15) Click on Restore



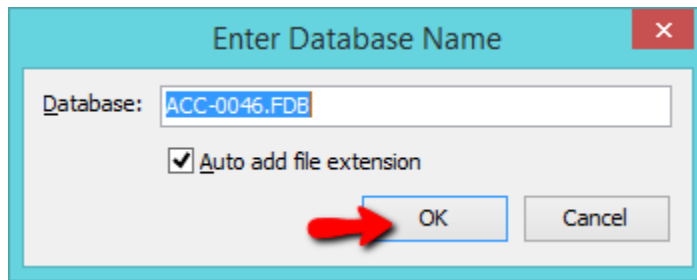
16) Click on ... Button



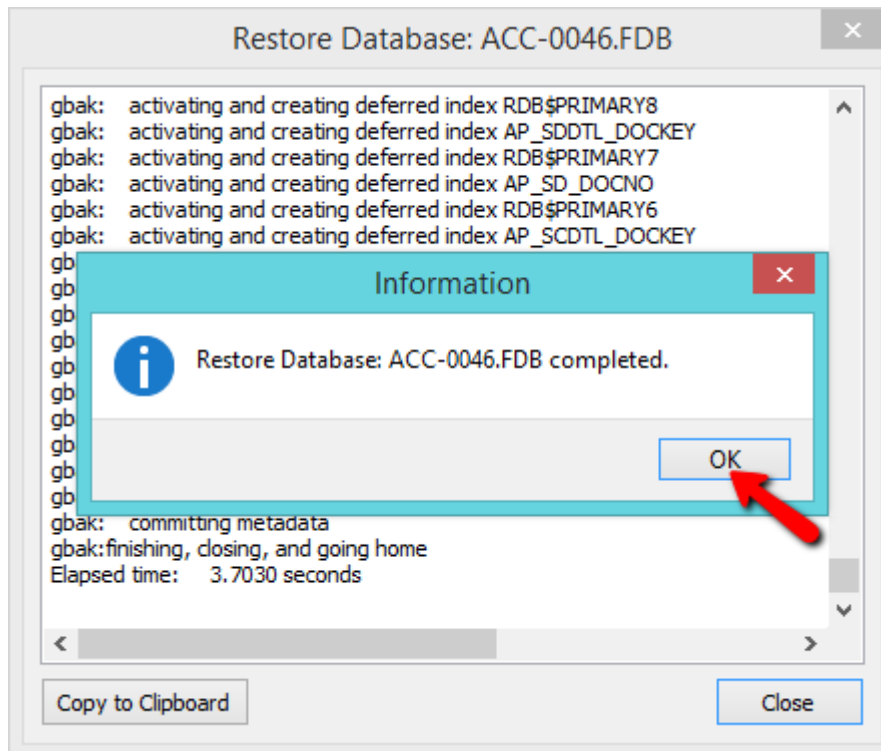
16) Select back the Backup File > and click on Open



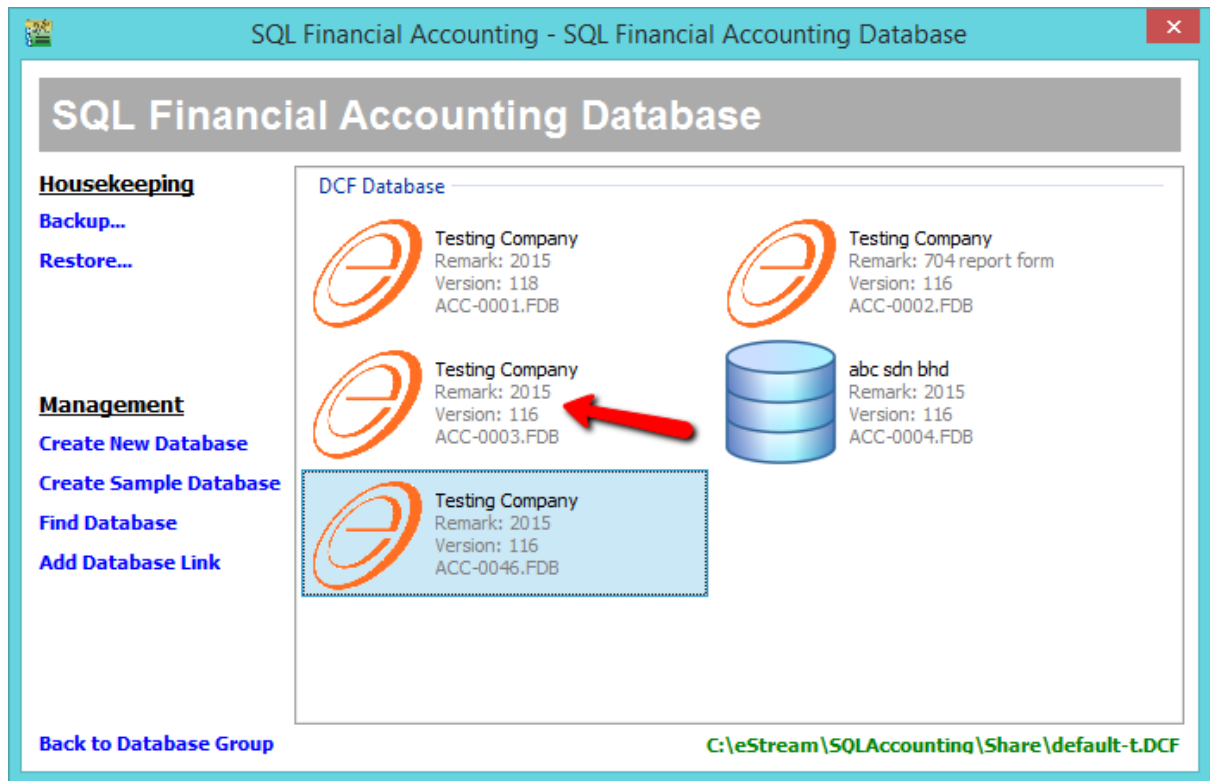
17) Click on OK



18) Click on OK



19) Click on OK



20) After restore successful, right click on your old database, you can choose Drop Link (to hide it) or delete database to permanent removed .

-to Drop Link : right click on your old database > drop database link > yes

-to delete permanently : right click on your old database > delete > no > yes